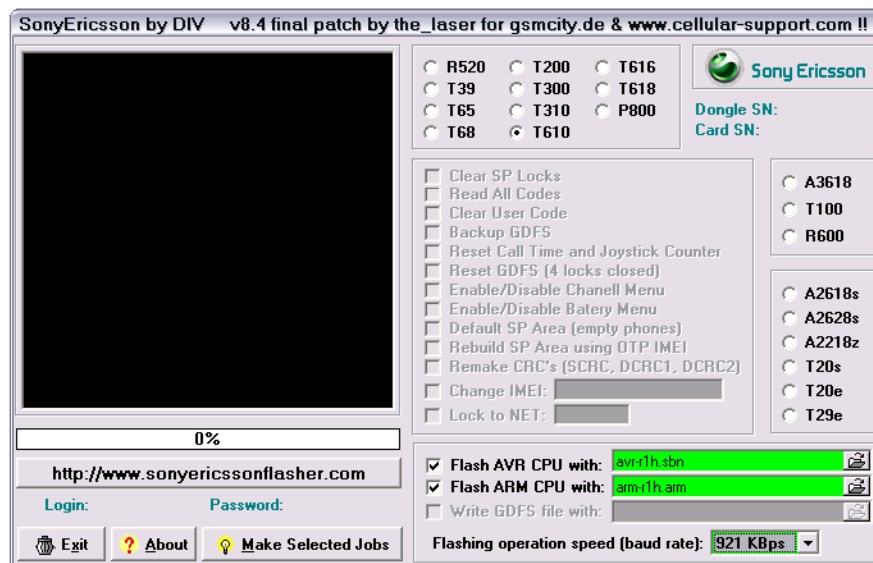
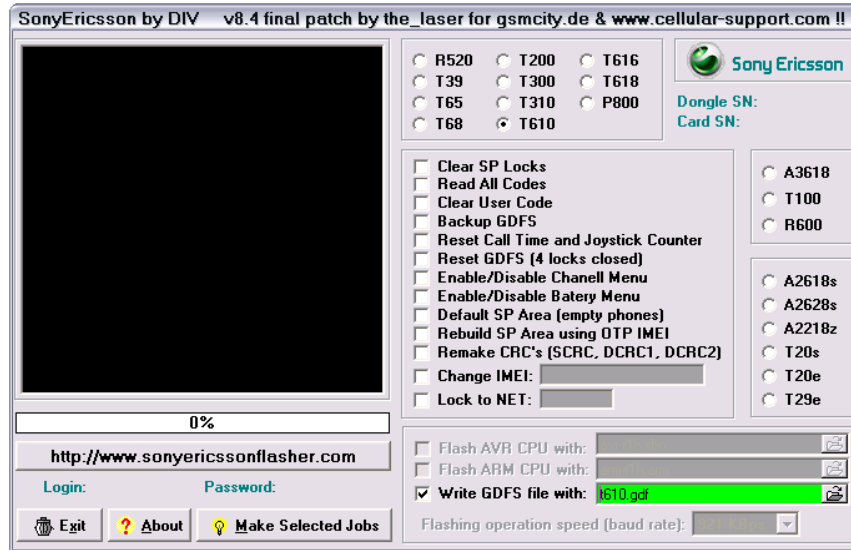


## MAKE YOUR OWN T610 TEMS

1. Tool requirements:
  - a. DIV84 LPT DONGLE with T610 Cable
  - b. Computer minimum Pentium-3 with Windows 98/2000/XP with LPT PORT available
2. Software requirements:
  - a. DIV84 Final or pbbSE.exe
  - b. SETOOL DOS version
  - c. UserPort.exe
3. Firmware requirement:
  - a. avr\_r1h.sbn, file size: 7,046KB
  - b. arm\_r1h.arm, file size: 2,568KB
4. Preparation:
  - a. Make a directory of C:\TEMS
  - b. Copy all files attached with this document into [C:\TEMS] folder
  - c. Copy the userport.sys file into C:\WINDOWS\System32\Drivers\  
d. Prepare your T610 stock phone with full battery charged. Do not use half charged battery or less, will cause a problem. NO SIM CARD required
  - e. Put the DIV84 LPT DONGLE on LPT Port, connect the USB Power cable
5. Flashing the Firmwares:
  - a. On [C:\TEMS folder], double-click on UserPort.exe > click [STOP] button > will appear 'Driver is not installed!'
  - b. Run div84final.exe program:
    - i. Select the phone type > T610
    - ii. Tick on Flash AVR CPU with: > select avr\_r1h.sbn file
    - iii. Tick on Flash ARM CPU with: > select arm\_r1h.arm file



- c. Plug the T610 Cable into your phone, put the battery, put the battery cover
  - d. Click on [Make Selected Jobs]
  - e. Flash will start, wait until all files flashed into your phone (100% done)
  - f. If some process failed (boot failed etc), try to release the cable, release the battery, connect again, insert battery, insert the battery cover and click again [Make Selected Jobs]. Do flash until 100% done.
  - g. After all flashing job are well done, release the cable and the battery.
6. Read the GDFS in bin format:
- a. Double-click on UserPort.exe, click [START] button > will appear 'Driver is installed!'
  - b. Run DOS Command Prompt: from Windows [start] button > All Programs > Accessories > Command Prompt > will appear black colored window
  - c. Type on black windows: 'CD C:\TEMS'
  - d. Plug the T610 Cable into your phone, put the battery, put the battery cover
  - e. Type the instruction: setool /O /b\$400000 /l\$400000, press [ENTER]
  - f. Phone will be booted (four steps), wait until reading process done (100%)
  - g. When success, will resulting avr00400000..00400000.bin file
  - h. If some process failed (boot failed etc), try to release the cable, release the battery, connect again, insert battery, insert the battery cover and click up arrow direction (to get again 'setool /O /b\$400000 /l\$400000' command), and press enter.
7. Generating TEMS activation gdf file:
- a. Type on Command Prompt: gettemsvar.exe avr00400000..00400000.bin, press [ENTER]
  - b. The program will create t68i.gdf and t610.gdf files. Make use only t610.gdf file to activate your T610 TEMS.
  - c. Close the DOS Window (black window).
8. Activate your TEMS
- a. Back to TEMS folder, double-click on UserPort.exe > click [STOP] button > will appear 'Driver is not installed!'
  - b. Run div84final.exe program:
    - i. Select the phone type > T610
    - ii. Tick on Write GDFS file with: > select the t610.gdf file



- c. Plug the T610 Cable into your phone, put the battery, put the battery cover
  - d. Click on [Make Selected Jobs]
  - e. Write GDFS will start, wait until 100% done successfully
  - f. If some process failed (boot failed etc), try to release the cable, release the battery, connect again, insert battery, insert the battery cover and click again [Make Selected Jobs].
9. Finalization:
- a. Release the cable and battery, put the SIM Card, put the battery back
  - b. Power ON the phone, when phones freeze, release the battery, insert back and try to power ON again. Reset all phone through the setting menu if necessary...
  - c. Enjoy your T610 TEMS Phone....